

AZO Vibration Bottom Type VB ... version H for reliable discharging from hoppers in the case of strict requirements for hygiene

**Reliable discharge
of products**

Hygienic design

**Shock pressure proof
and vacuum-proof**

**Silicone-free food-
grade sleeve**

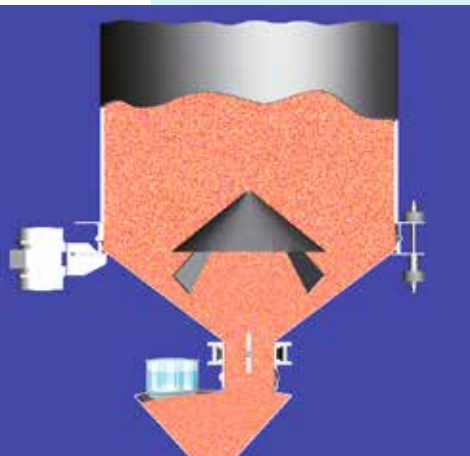
Preferred applications

For safe discharge of powdery, crystalline, fatty and granular bulk materials from hoppers. Hoppers are discharged completely without leaving residue. Funnel formation and bridging in the hopper are prevented. Can be used for virtually all bulk materials, even those that flow poorly, in the foods, plastics, chemicals and pharmaceuticals industries.

Special advantages

- Reliable discharge and even fall of the product column (mass flow)
- Hygienic design
- Smooth internal contours in the silo / hopper without any changes in diameter
- Smooth surfaces on the exterior, resulting in easy cleaning
- No inaccessible cavities and exposed screw threads
- Elastomer sleeve is easy to assemble and has an accurate fit
- The sleeve is silicone-free, conductive and is approved as food-grade
- Assembly using clamping segments and pressure pieces
- Screw locking by means of wedge locking washers
- Shock pressure proof to 2 bar (overpressure)
- Vacuum-proof
- Long elastic area, resulting in excellent disconnection between the fixed part of the hopper and the vibration bottom

THE INNOVATION



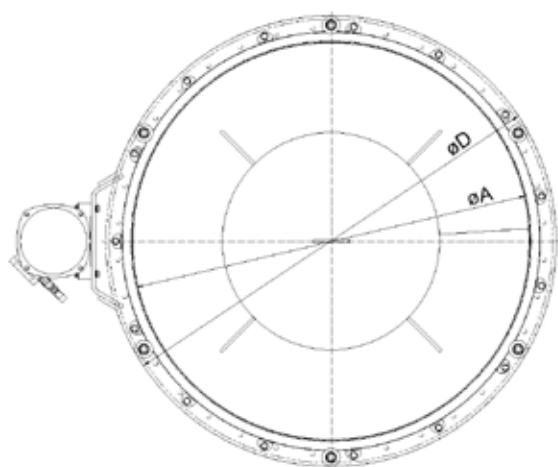
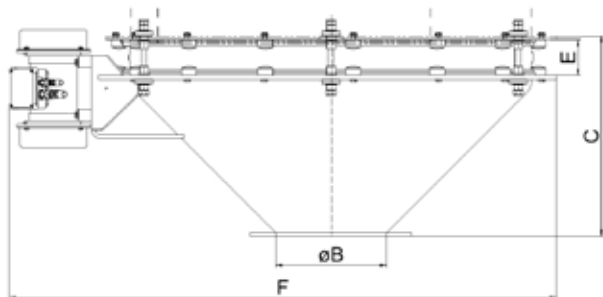
How it works

The lateral, imbalance vibrator sets the vibration bottom in horizontal, circular vibration. The vibrations are transmitted to the materials column via the simultaneously vibrating relieving cone inside the vibration bottom. This sets the bulk materials in motion and the level drops evenly without resulting in funnel flow or bridging. The bulk materials reach the outlet safely through the annular gap.

Vibration intensity can be adjusted at the imbalance vibrator and depends on what materials are being discharged and the required discharge rate.

Technical Data

Dimensions for vibration bottoms VB 500 – VB 1100, design H



Collar: EPDM black or light
(FDA and EU 1935/2004 approved, phthalate-free)

Design: nickel chromium steel 1.4301; 1.4404
Various surface finishings are available depending on hygiene requirements

Power supply: 380- 420 V, 50 Hz
420- 480 V, 60 Hz

Type	Drive kW	Protection type	Thermal class	Gross capacity dm ³	Weight kg
VB 500	0,15	IP 65	B	aprox. 45	41
VB 800	0,20	IP 65	B	aprox.. 80	100
VB 1100	0,40	IP 65	B	aprox. 200	160

Type	Ø A	Ø B	C	Ø D	E	F	Tension rod	
							Quantity	Dimensions
VB 500	500	200	290	655	99	870	4	M8x178
VB 800	800	300	420	955	99	1180	4	M16x213
VB 1100	1100	300	550	1244	99	1510	6	M16x213