

## AZO Hopper connector type AT 500/...

**Reliable discharge  
of product**

**Easy to install**

**Stainless steel  
design**

### Preferred applications

The hopper connector is used together with suction nozzles as discharge unit for product stored in the silo or hoppers.

### Specific advantages

- Easy to install
- Stainless chrome-nickel steel design
- Abrasion-resistant versions for special applications
- Standardised components for material and machine-specific batch systems

## THE INNOVATION



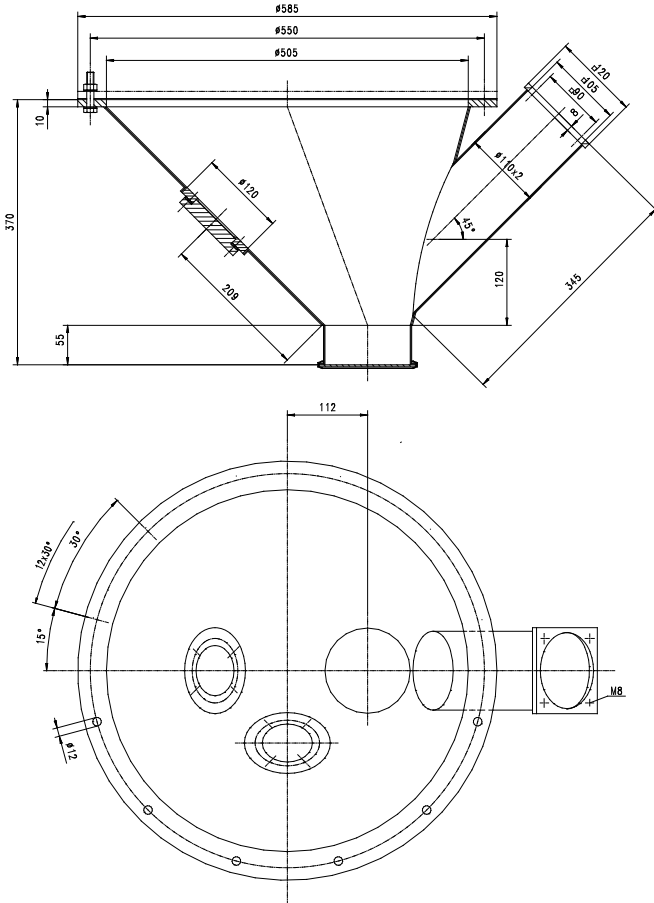
### How it works

The hopper connector is flanged to the silo or hopper outlet and serves there to draw off the bulk goods. A vacuum generated at the suction nozzle sucks the product out of the hopper connector through the suction nozzle and into the conveying line.

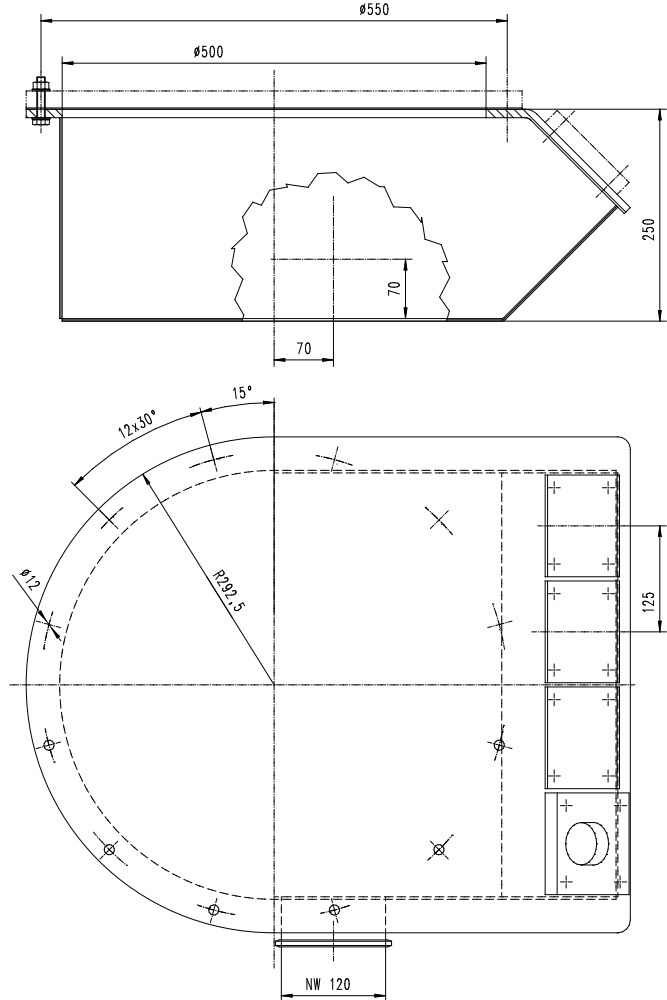
Up to 8 outlets can be connected to one silo. An additional fitting at the bottom or on the side allows emergency emptying or residual discharge.

## Technical data

### Hopper connector type AT 500/1



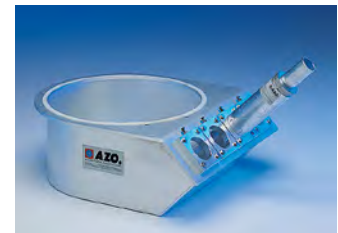
### Hopper connector type AT 500/...



Type	Max. number of suction nozzles	Suction nozzle types	Weight in kg
AT 500/1	1	SR 38 SR 50 SR 65	30
AT 500/2	2	SR 38 AT SR 50 AT SR 65 AT	30
AT 500/3	3	SR 38 AT SR 50 AT SR 65 AT	30
AT 500/4	4	SR 38 AT SR 50 AT SR 65 AT	30



Hopper connector for 1 suction nozzle for connection to silo outlet taper.



Hopper connector for max. 4 suction nozzles with lateral opening for emergency emptying.