

## Two-way diverter type RW GE...

**For diverting and connecting bulk material lines in pneumatic conveying systems**

**Inflatable sealing**

### Preferred applications

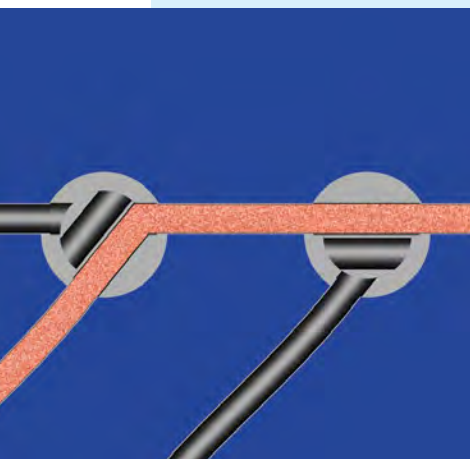
The two-way pipe diverter type RW GE... serves for branching and joining bulk materials lines within pneumatic conveying systems. It is suitable for powdery and granular materials in the food, plastics and chemical industries. It can be installed in any position.

The standard diverter can be used for product temperatures ranging from -25 °C up to +80 °C at ambient temperatures of -10 °C up to +40 °C.

### Design

Sturdy and enclosed housing of cast aluminium with adjustable air pressure including solenoid valve and limit switch all completely wired. Valve diverter body of cast aluminium with smooth ports and stainless steel pipe connections to fit the AZO pipe clamp. Static seals up to 3 bar pressure of food-quality silicone, optionally available with inflatable seals for pressure up to 6 bar. Encapsulated adjusting unit integrated in the housing. The conveying route can be installed left or right. Supply voltage 220V, 50Hz.

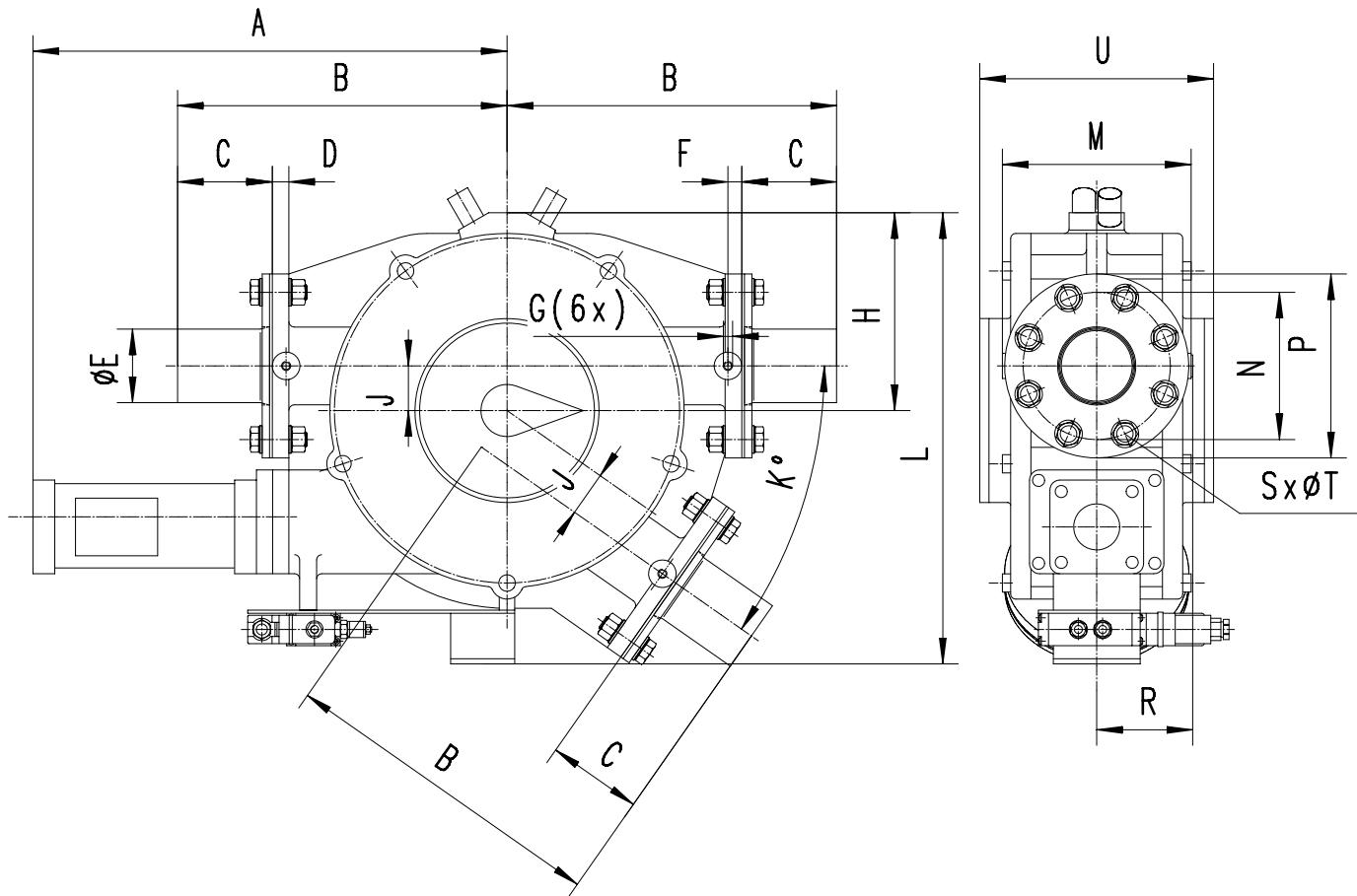
## THE INNOVATION



### How it works

Adjustment by means of a pneumatic cylinder using water- and oil-free 6 bar compressed air. Precise positioning of the valve diverter body and pick-up via limit switches. The setting of the diverter valve should not be changed during a conveying cycle or when the system is depressurized.

## Technical data



Type	A	B	C	D	ØE	F	G	H	J	K	L	M	ØN	ØP	R	S	ØT	U
RW GE 50	413	278	73	16	50	12,5	M10x20	170	35,0	33,5°	385	170	125	165	85	4	18	224
RW GE 65	453	303	88	16	65	12,5	M10x20	185	42,5	36,7°	422	190	145	185	95	4	18	234
RW GE 80	493	358	103	18	80	15	M10x20	215	48,5	36,6°	487	205	160	200	102	8	18	254
RW GE 100	543	388	118	18	100	15	M10x20	240	57,5	35,0°	536	230	180	228	115	8	18	260
RW GE 128	656	488	150	20	128	17,5	M12x24	280	70,0	35,5°	650	255	210	250	128	8	18	298