

## Hose switch type SLD ... with inflatable seal

**Minimum  
directional  
change  
of product**

**Streamlined  
design**

**Prevents  
product  
deposits**

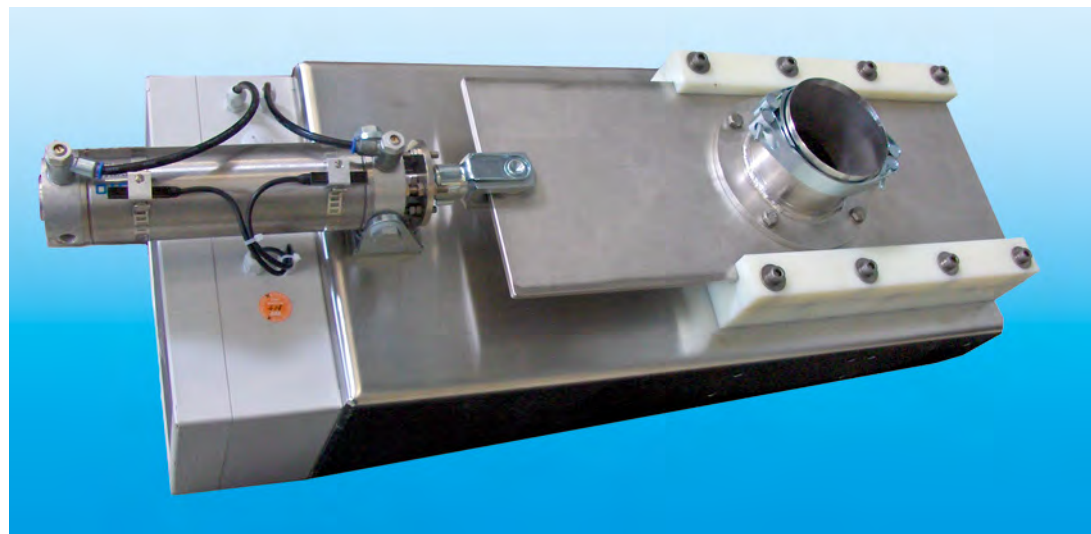
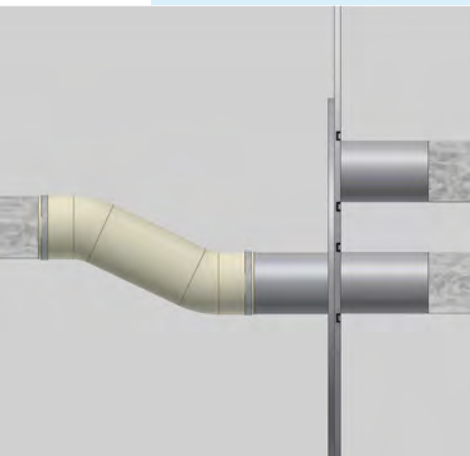
### Preferred applications

AZO hose switch was developed for use in pneumatic pressure conveying systems. Due to their design standard diverter valves with rotary elements cause a directional change of the delivery flow, resulting in a larger pressure drop. With the AZO hose switch a solution has been developed that makes it possible to achieve minimum directional change of product.

### Special advantages

- Streamlined, smooth passage with minimum directional change of product
- Particularly advantageous for fatty products
- Prevents the formation of deposits of heat-sensitive products
- Hose switch can be used at pressures of up to 3 bar absolute

## THE INNOVATION



### How it works

Hose switches are used to switch product flow in conveying systems. Depending on the delivery direction, it is possible to direct product coming from two lines into one delivery line or vice versa. The non-connected line is sealed off tight.

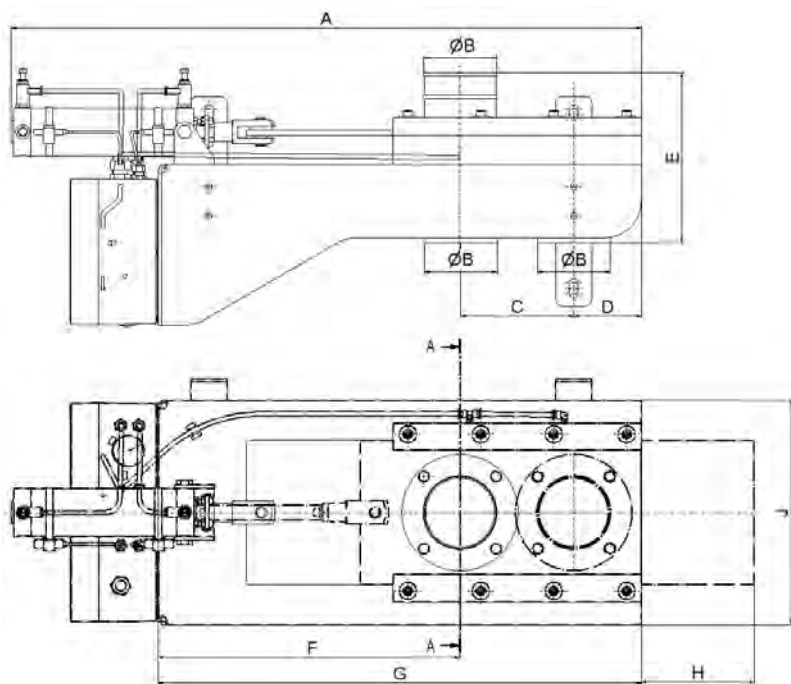
After a pneumatic cylinder has precisely aligned the slide plate with attached hose connector flush with the mating connection

piece, a hollow chamber seal per connector is inflated with compressed air. Due to this change in shape, the seals snuggle up to the slide plate, thus sealing the gap between the slide plate and connector housing. The air pressure is measured by a pressure switch with two switching points, which regulate seal inflation and product delivery. The end position of the slide plate

is precisely aligned by adjustment facilities on the slide plate mount and by an adjustable stop on the cylinder head. This ingenious design makes it easy to disassemble the slide valve and clean the hose switch.

## Technical data

### Hose switch SLD..., SLD...S and SLD...I

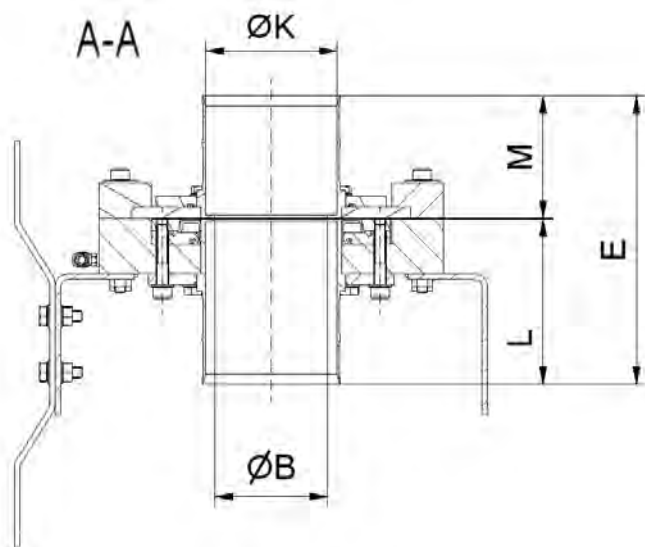


<b>Hose switch:</b>	<b>SLD ...</b>
Nominal diameter in mm:	65, 80, 100, 128
Ambient temperature:	0 °C to +40 °C
Product temperature:	+5 °C to +80 °C
Pressure delivery:	up to 3 bar absolute
Conveying hose length on slider valve side:	DN 65 min. 800 mm DN 80 min. 1000 mm DN 100 min. 1000 mm DN 128 min. 1300 mm
Noise level:	70 dB(A)

<b>Compressed air for changeover</b>	
Compressed air quality conforming to ISO 8573-1: 2001:	Class 3
Connection:	Hose Ø 8x6 mm External tolerance
System supply pressure:	min. 4 bar to max. 8 bar
Compressed air consumption:	DN 65 1.4 dm³/stroke DN 80 2.9 dm³/stroke DN 100 2.9 dm³/stroke DN 128 6.2 dm³/stroke

<b>Inflatable seal</b>	
Material:	Silicon, food-safe (FDA-approved)

### Ausführung Schlauchweiche SLD...I



#### Designation:

#### No ID code

version: 1 hose connection socket, 2 pipe nozzles;  
nominal diameter (DN) = nominal diameter of hose socket/pipe nozzle

#### ID code S

version: 3 hose connection sockets (external hose),  
nominal diameter (DN) = nominal diameter of hose sockets

#### ID code I

version: 3 hose connection sockets (internal hose),  
nominal diameter (DN) = nominal diameter of hose

Type	A	Ø B	C	D	E	F	G	H	J	Ø K	L	M
SLD 65	785	65	120	75	210	390	585	120	308	—	—	—
SLD 65 I	785	65	120	75	210	390	585	120	308	76,5	123	87
SLD 80	904	80	155	92,5	238	414,5	662	155	308	—	—	—
SLD 80 I	904	80	155	92,5	210	414,5	662	155	308	93,5	123	87
SLD 80 S	933	80	155	92,5	242	414,5	662	155	308	—	—	—
SLD 100	900	100	155	92,5	238	414,5	662	155	308	—	—	—
SLD 100 I	1040	100	183	106,5	369	467,5	757	183	336	115	201,5	166
SLD 128	1040	128	183	106,5	238	467,5	757	183	336	—	—	—