

Big bag connecting system for low-dust docking and reliable discharge

**Low-dust
docking**

**Reliable
discharge**

**Easy
handling**

**Individual
use**

Preferred applications

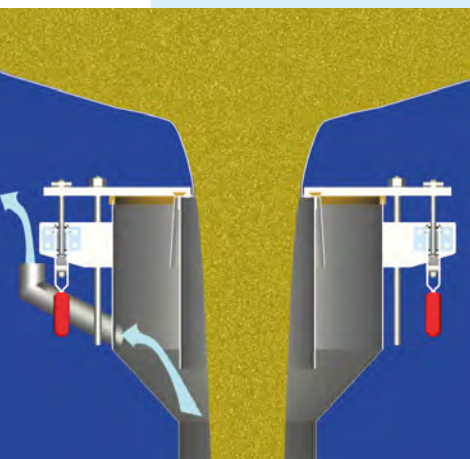
The big bag connection system BBA provides an essential interface between product feeding and the production process itself.

It is used for low-dust docking and secure discharging of big bags, including those with an inlet, in the food, pharmaceutical, chemical and plastics industries.

Special advantages

- Double-pipe design for additional protection against the escape of dust
- Also suitable for big bags with inlet
- Interchangeable inner pipe (optional): for connecting different sizes of big bag outlet and for easy cleaning
- Chrome-nickel steel design with various surface finishes
- Can also be used in potentially explosive areas

THE INNOVATION



How it works

The big bags are hung on mobile lifting gear and transported to the corresponding big bag connection system, where they are set down on a support plate. The big bag outlet, which is still closed, is pulled over the inner pipe of the connection system and clamped firmly in place by manually lowering the pressure disc.

If wrinkles form in the outlet when the big bag is connected, the double-pipe design provides additional protection against escaping dust. Any product that

escapes is returned to the process via an annular gap between the outer and inner pipes. The system is sealed using static gaskets.

The closure cord is then opened and discharge into the subsequent process begins. The entrained air and any dust which arises are drawn off at the aspiration connection.

For non-free-flowing bulk materials, a vibration discharge can optionally be provided. On request, the big bag connection system can be fitted with a low

level indicator to enable the big bag to be replaced promptly and avoid production downtimes.

Optional available



Interchangeable inner pipe

The inner pipe can be removed for cleaning purposes or to use big bags of different outlet diameter. To do this, the pressure disc is released and the inner pipe is removed from the top.



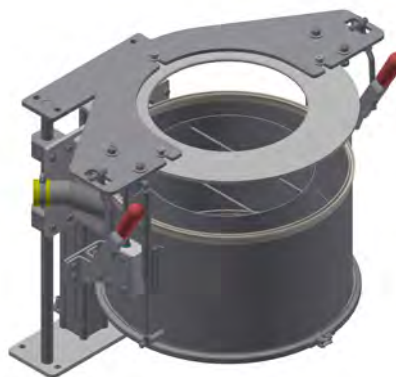
Pneumatic docking

At higher grades of automation, two-hand control can be used to move the pressure disc pneumatically downwards and clamp the big bag outlet firmly in place.



Pneumatic sealing

Instead of the static gaskets, two inflatable gaskets are used which seal off both the outer pipe and the inner pipe in the inflated state. This presses the big bag outlet against the inner pipe in a low-dust manner. This option is preferred for very fine and dusty products.



Outlet tightening device

During the discharge process, wrinkles can form in the big bag outlet. This prevents free outflow of the product. By automatically lowering the big bag connection system, the outlet remains taut throughout discharge.



Special designs

Other variants such as air filters, vibration screen or castellated vibration grating are available on request.