

## Docking station for AZO BATCHTAINER®

### Dust-free discharge

### Fast and flexible product change over

### Exact batch documentation and tracking (lot tracking)

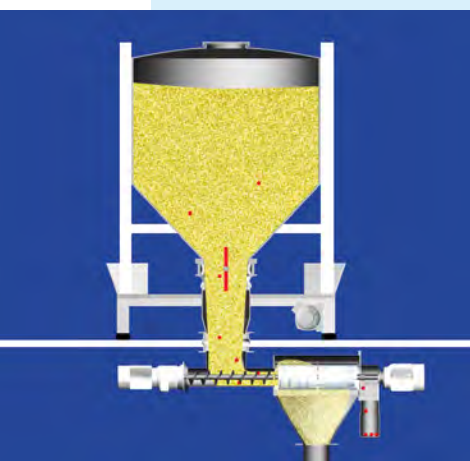
### Preferred applications

The container docking station provides dust-free product discharge from BATCHTAINER®. Use of BATCHTAINER® is increasing due to the flexibility and ease of connection to an automated system. Processes requiring non bulk ingredients with accurate lot and batch tracking are excellent applications for these containers.

### Special advantages

- The patented docking collar provides dust-free product discharge from BATCHTAINER®
  - Fast and flexible product change over
  - Even ingredients which are difficult to discharge can be handled using the vibratory discharge system
  - Heavy duty construction, fits commonly used container styles and sizes
- Optional identification systems prove that the right container is in place and provide batch tracking and documentation

## THE INNOVATION



### How it works

The AZO BATCHTAINER® is placed on the container docking station by a fork lift or other lifting device. If vibration is required for discharge the container must be locked in place with air operated latches. An optional electronic identification system assures that the right container is in place before discharge can begin. A dust tight connection is made with the patented docking collar.

The BATCHTAINER® remains on the docking station as long as the ingredient is required by the process. When changing containers you simply close the discharge valve, and, if necessary, release the locking device. Then the BATCHTAINER® can be returned to storage.

## Technical data

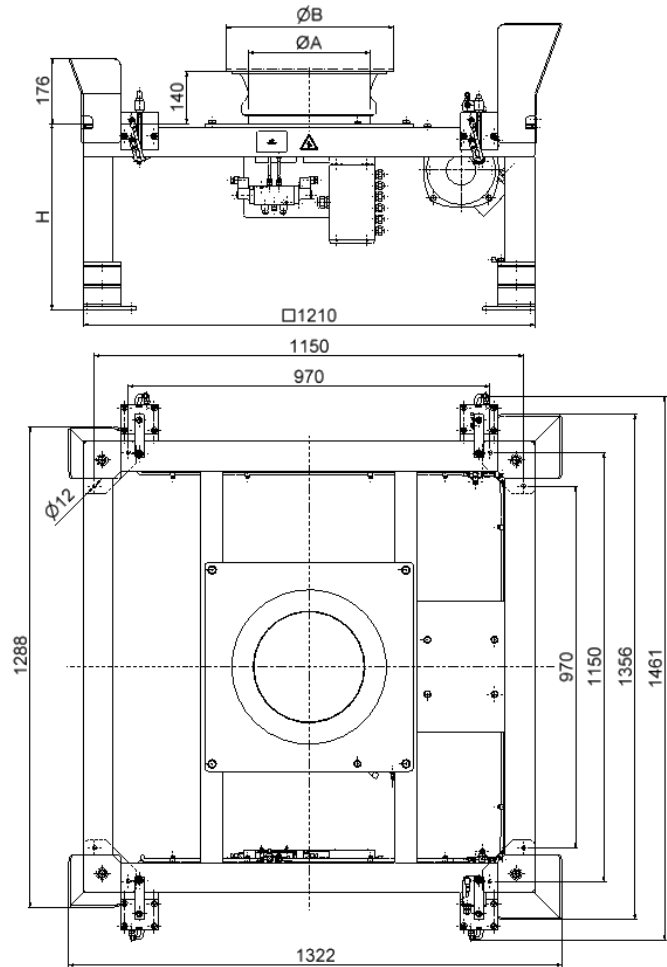
Available for:	BATCHTAINER® 1,200 mm dia. or 1,200 x 1,200 mm (48" dia. or 48" x 48") 500- 2.000 l capacity (17,5- 70 cu. ft)
Compressed-air consumption:	5.4 l per container change p = 6 bar (0.12 CFM @ 90 PSI)
Docking collar:	200, 250, 300 mm NW (8", 10", 12")
Material of construction:	Frame: Epoxy coated steel Options: Stainless steel type 1.4301 (304) Product contact parts: Stainless steel type 1.4301 (304), 1.4404 Optional surface finishes A2-1 to A2-4 L4-1 to L4-4
Weight:	250 kg (550 lb.)
Electrical Classification:	IP 54
Nominal voltage:	400 V / 50 Hz or 480 V / 60 Hz
Control voltage:	24 V or 110 V
Connected load:	0.4 kW (0.5 HP)
Noise level:	< 70 dB (A)



Docking station without BATCHTAINER®



Docking station for AZO BATCHTAINER®



Ø A	Ø B	H
200 mm	min. 300 mm	250 mm – 600 mm
250 mm	min. 340 mm	
300 mm	min. 440 mm	

The design is subject to change due to our continuous improvement program.