

Cleaning station for dry cleaning containers and hoppers

Dry cleaning

Adaptable to
various types of
container

Suitable for
containers
with small inlet
apertures

Closed unit for
operator protection

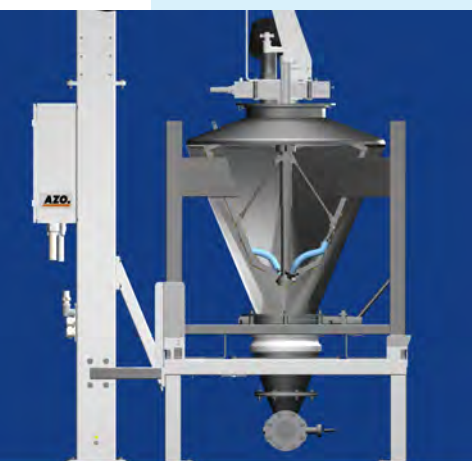
Preferred applications

For cleaning the inside of rotation-symmetrical containers and hoppers with compressed air. Used wherever dry cleaning is sufficient or wet cleaning is not possible. The ingenious design makes it possible to automatically remove product residue and clean the inside of containers. Thanks to the folding mechanism, it is also possible to clean containers with small inlet apertures, as the cleaning unit only unfolds once it is inside the container.

Special advantages

- Downtimes and transportation over long distances are avoided as separate wet cleaning with subsequent drying is rendered unnecessary.
- Containers with small inlet apertures are cleaned effectively.
- The cleaning unit can be adapted to virtually any geometric shape of rotation-symmetrical containers.
- Closed system during cleaning avoids exposing the operator and the environment to dust.
- Various levels of automation possible.

THE INNOVATION



Design

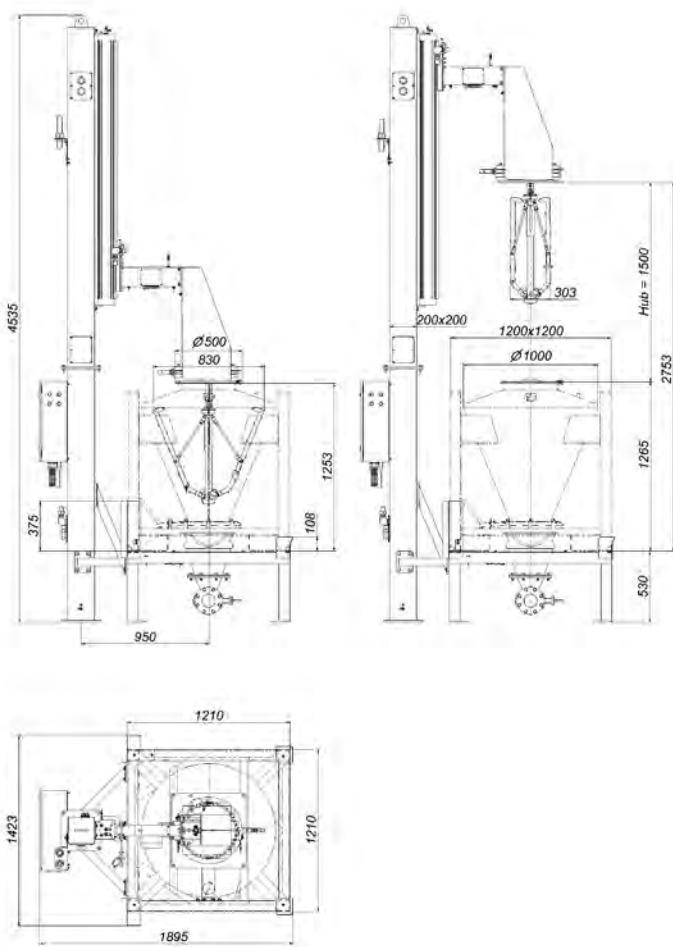
The cleaning unit, which is moved vertically by means of a linear drive, is attached to a vertical column with a cantilever arm. The cleaning unit consists of two arms on which the cleaning nozzles are attached. These arms are folded together tightly as the cleaning unit is inserted into the container and they do not open out until fully inserted in the container. Once unfolded close to the walls, the unit is rotated during the cleaning cycle by a pneumatic

rotary drive. This enables it to reach all corners on the inside of the container and to clean them with compressed air. The nozzles have a central supply of cleaning air that runs in a flexible energy supply chain.

The container equipped with an outlet valve is placed in the cleaning station. Centring corners make it easier to position the container. The patented docking collar creates a dust-tight

connection between the container outlet and the suction hopper. An aspiration line from a central filter station is connected to the suction hopper. The product residue that are removed during the cleaning process are drawn off and disposed of in a central system.

Technical data



Weight:	approx. 630 kg
Material:	Frame: Mild steel, epoxy resin-coated, parts in immediate contact with products: Chrome-nickel-steel 1.4301
Control voltage:	24 V
Compressed air:	min. 6 bar
Compressed air consumption incl. control air:	approx. 360 m ³ /h
Aspiration	
Air volume:	min. 900 m ³ /h
Container size:	1200x1200 mm

Practical example:

Cleaning time:	2 min
Compressed air:	8,5 - 9 bar

Product	Ø residual amount befor cleaning	Ø residual amount after cleaning
Kaolin	23 g	< 1 g
Chalk	116 g	10 g
TiO ₂	344 g	36 g

How it works

The container to be cleaned is placed in the cleaning station. The linear drive with the attached cleaning unit is in the upper end position and the rotary drive is in the starting position. The cleaning air supply and extractor are switched off. The container can be positioned manually using a forklift truck or moved into the station using a roller or chain conveyor. It is possible to implement various levels of automation. The container outlet is connected to the docking collar on the suction hopper either by lowering the container or by raising the suction hopper, depending on the design.

Various levels of automation are also available for opening the container cover. Once the container outlet valve is open, the cleaning unit is moved into the container to the lower end position. The following sequences run automatically in accordance with the specified parameters. Once the cleaning unit has been inserted into the container, the arms with the cleaning nozzles unfold and the aspiration is switched on. When planning the system, it is important to ensure that the air volume for aspiration is greater than the volume of compressed air for cleaning.

The slight negative pressure in the container helps to reliably prevent dust from escaping.

A rotary drive rotates the cleaning unit when the cleaning air is turned on. Product residue adhered to the container are blown off from the walls and sucked downwards into the central filter. The length of the cleaning cycle can be varied depending on the level of soiling.

At the end of the cleaning operation, the air supply to the cleaning nozzles is shut off and the arms are folded together.

The cleaning unit can now be moved out of the container and aspiration stopped. The machine operator closes the container outlet valve and locks the container cover in place to then move the container out of the station. The clean container can now be immediately returned back to production.