

Discharge station for big bags with big bag connection system AGW for controlling exposure to dust

**Designed for use in
zone OEB 3**

**Reliable handling
of big bags**

**Rapid, dust-tight
connections**

**Discharge aids
for difficult
bulk materials**

Preferred applications

Flexible bulk materials receptacles such as big bags have become firmly established for handling powders in a variety of branches. They have clear advantages over sacks when it comes to transporting and storing bulk materials. They are environmentally friendly, require less operating staff and storage space and reduce costs for transport and processes.

Apart from free-flowing bulk materials, poor-flowing products can also be discharged reliably using appropriate discharge aids.

Key advantages

- Reliable discharge of bulk materials into closed production systems with little generation of dust
- Operator protection thanks to special design of the docking device. Can be used in a zone meeting OEB 3 requirements
- Convenient lifting of big bags from pallets to the big bag discharge station
- Suitable for various sizes and types of big bags
- Easy to use thanks to ergonomic design
- Also suitable for big bags with liners

Optional features

- Massager device for bulk materials with poor flow properties
- Interior lighting
- Monitoring effectiveness of aspiration
- Integrated cleaning mechanism
- Conversion kit for retrofitting existing big bag discharge stations on the plant operator's premises.

THE INNOVATION



How it works

After placing the big bag in the station, the big bag outlet is guided through the opening in the docking housing. Using the gloves integrated into the housing, the operator pulls the big bag outlet over the inlet port of the connection system. The operator then actuates the capacitive two-hand safety control unit to pneumatically lower the docking ring and inflate the seal.

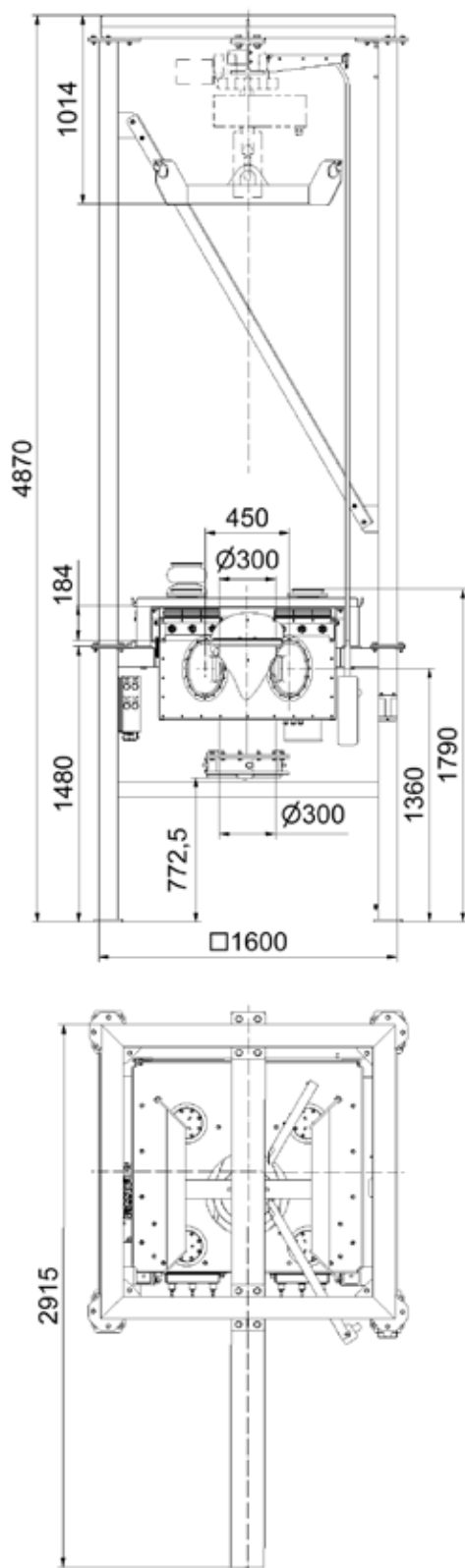
Once the outlet is docked in a dust-tight manner, the cord fastener of the big bag can

be undone. Gently lifting the big bag using the chain hoist straightens up the outlet, allowing the product to flow out unhindered. Safe discharge into the subsequent process can then begin. For bulk materials with poor flow properties, the big bag support table is equipped with an additional massager device. Once it is completely empty, the big bag is evacuated by removing the air from the interior. The operator seals the big bag using the gloves integrated into the housing, removes it from the

station and can then fold it ready for disposal.

If desired, the big bag discharge stations can be provided with empty level indicator systems to ensure the big bags are changed promptly.

Technical data



Load-bearing capacity	1000 kg or 2000 kg			
Design:	frame: mild steel, epoxy-coated alternatively: chromium-nickel steel 1.4301 parts in immediate contact with products: chromium-nickel steel 1.4301 Choice of surface finishes A2-1 to A2-4 L4-2 to L4-3 (refer to AZO's surface finishes)			
Weight:	1050- 1700 kg (without big bag)			
Protection class:	IP 54			
Nominal voltage:	400 V / 50 Hz			
Control voltage:	24 V			
Connected load:	1,76 kW			
Noise level:	< 70 dB (A)			
Seismic zone	Calculation according to EN1998-1:2010 The installation is inspected separately for each installation site			
Containment zone that can be achieved:	OEB 3			
Use for:	big bags, max. 1200x1200 mm with heights of H = 1500 mm, 1750 mm, 2000 mm with outlet connectors:			
	outlet-Ø D [mm]	outlet length min. A [mm]	fastened length min. B [mm]	standard loop length C [mm]
	330- 380	550	400	300
	380- 500	600	450	300
	500- 600	650	500	300
Big bag weight max:	1960 kg for station with load capacity 2000 kg 960 kg for station with load capacity 1000 kg			



Support hopper with massager device